



Morningside
Elementary

Welcome to
Quarter 3

AGENDA

- ❖ **Norms for our Meeting**
- ❖ **Highlights of the Grade Level Plan for All Students**
- ❖ **Delivery vs. New Teacher**
- ❖ **How Parents Can Help**
- ❖ **Specifics to In-Person Student Logistics & Mitigation Strategies**

NORMS

We understand that everyone has strong opinions about what is in the best interest of students but this is not the place to debate it. Reopening plans were created collaboratively with teachers utilizing the personnel we have available.

Today's Norms:

- ❖ Be Present
- ❖ Value and Recognize All Perspectives
- ❖ Student Centered Mindset
- ❖ Assume Goodwill

An abstract graphic at the top of the slide featuring a wavy, horizontal band of colors. From left to right, the colors transition from a warm orange-red to a bright yellow, then to a vibrant green, and finally to a light blue on the far right. The colors are layered and blended, creating a sense of movement and depth.

Kindergarten's INSTRUCTIONAL MODEL

Key Points & Highlights

No Hybrid Model: Though we are at 61% overall and much higher return in some grades, through much problem solving we have avoided the HYBRID model.

Maximizing Staff & Minimizing Change for Children

Visitors and Volunteers: At this time, we will not be having classroom volunteers or lunch visitors. We hope to be able to welcome visitors and volunteers into the school in the future.

Dolphin Toolkits Continue: In quarter 3, there will be toolkits for virtual students and those same materials for in-person children

Kinder Plan

- The “original” teacher will still be the “original” teacher.
- Instruction will be presented by the “delivery” teacher BUT all assignments will be turned into your “original” teacher.
- FOR VIRTUAL STUDENTS:
 - All assignments will still be uploaded into Seesaw allowing the “original” teacher to still receive, see and assess all assignments.
 - Any questions regarding instruction, classwork and assignments can be directed to the “delivery” teacher.
 - Any questions regarding the academic progress of your child should be directed to the “original” teacher.

We will still function as a team and have cohesive plans and lessons ensuring that all students

TIME	KINDERGARTEN SCHEDULE -VIRTUAL
8:00 - 8:20	Class Meeting and SEL
8:20 - 9:00	Math
9:00 - 9:45	Snack and Recess (indoor or outdoor)
9:45 - 10:15	Foundations Phonics
10:15 - 10:45	Writer's Workshop
10:45 - 11:00	Brain Break
11:00 - 11:30	Specials
11:30 - 11:45	Restroom Break and Handwashing
11:45 - 12:30	Lunch
12:30 - 12:45	Social Studies and Science
12:45 - 1:00	Interactive Read Aloud
1:00 - 1:30	Learning Centers
1:30 - 1:45	Lexia Time
1:45 - 2:15	Recess
2:15 - 2:30	Dismissal procedures

TIME	KINDERGARTEN SCHEDULE - FACE TO FACE
7:30 - 8:00	Arrival, Breakfast and Independent Reading Time
8:00 - 8:20	Class Meeting and SEL
8:20 - 9:00	Math
9:00 - 9:30	Snack and Recess (indoor or outdoor)
9:30 - 9:45	Restroom Break and Handwashing
9:45 - 10:15	Foundations Phonics
10:15 - 10:45	Writer's Workshop
10:45 - 11:00	Restroom Break and Handwashing
11:00 - 11:30	Specials
11:30 - 11:45	Transition
11:45 - 12:00	Restroom Break and Handwashing
12:00 - 12:30	Lunch
12:30 - 12:45	Social Studies and Science
12:45 - 1:00	Interactive Read Aloud
1:00 - 1:30	Learning Centers
1:30 - 1:45	Pack up, Clean up & Restroom
1:45 - 2:15	Recess
2:15 - 2:30	Dismissal procedures



Kinder Students at MES

- Schedule is 8 AM - 2:30 PM as of 1/25/21
- ESOL, SpecEd, Intervention - per each child's individual plan, which will be shared by appropriate teacher
- Specials - On a rotating schedule (PE, Art, Music)
 - In-Person - PE, Art, & Virtual Music M, T, TH, F
 - Virtual Students - Asynchronous PE & Art + Virtual Music M,T, Th, F
 - Virtual Students - Live specials opportunity on Wednesdays for PE at 9:30am & Art at 10:05am

WEDNESDAYS

WEDNESDAYS FOR F2F AND MES VIRTUAL PLANS

STUDENTS

- Our first “Reunion Wednesday” is February 10th, 2021 from 9:00 – 9:45am for our Kindergarten
- Virtual Students will have optional live special classes - Art & PE
- Time to complete assignments independently
- Student Schedule for Independent Practice: Approximately 2 Hours

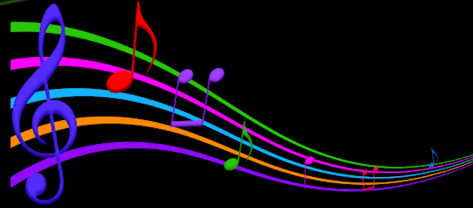
TEACHERS:

- Will create/assign lessons that address previously taught content
- Provide intervention/enrichment during designated times
- Offer online support via office hours
- Monitor assignment completion and provide feedback to students

What is a Delivery Teacher?

- A highly qualified, certified teacher who is handling the delivery of instruction, either in the virtual or face to face plan.
- The need for a delivery teacher is due to the staffing needs at our school.
- Planning will be done by the kindergarten teachers for all activities.
- If there is a school-wide or longer closure which requires our school to return to full virtual learning, your child will resume daily classes with original teacher and the original classmates.
- There will be “Reunion Wednesdays” to keep connections with students and teachers where the original class will get back together periodically for a short time to re-connect.

Teacher's Delivering Instruction	Students Receiving Instruction	Number of Students
Ms. Huff	In- Person with Ms. Huff	10 students
Ms. Lowe	In-Person with Mrs. Wright	8 students
	Ms. Lowe's Virtual Learners	6 students
	Ms. Huff's Virtual Learners	7 students
Mrs. Stagge	In-Person with Ms. Staggs	9 students
Ms. Georgee	In-Person with Mrs. Hardrath	8 students
	Ms. George's Virtual Learners	10 students
Ms. Snapp	In-Person with Mrs. Letchumanan	9 students
	Mrs. Staggs's Virtual Learners	5 students
	Ms. Snapp's Virtual Learners	8 students
Mrs. Baxter-Holmes	Mrs. Baxter-Holmes Virtual Learners	10 students
	Mrs. Amevo's Virtual Learners	7 Students
Mrs. Amevo	Mrs. Amevo's In-Person Learners	6 students
	Mrs. Baxter-Holmes In-Person Learners	4 students



SPECIALS

FACE TO FACE

- Art - Art on a Cart
- Music - Virtual in the Class
- PE - On field or in classroom for inclement weather (with low to no impact activities in classroom)

VIRTUAL

Students have choice boards M, T, TH, F created by our Art, PE Teachers. Students will join music per schedule.

Wednesdays - live sessions will be offered for virtual students in PE & Art.

Quarter 3 Building-Wide Changes

The following areas or programs are cancelled until further notice. Teachers involved in these programs have been reassigned as delivery or other teachers for the 3rd quarter.

- ❖ Media Center Book Check-Out
- ❖ Morning Video Announcements (Will reassess after 2/8/21 what can be offered through volunteers or other solutions)
- ❖ Spanish Enrichment Class
- ❖ STEM Enrichment Class

What Can MES Parents Do?

- 1) As families are in the community, continue to reinforce wearing masks, washing hands, and social distancing
- 2) Support one another's choices for remaining virtual or returning Face to Face. Each family has made the right choice!
- 3) Continue to communicate with your teachers - your delivery teacher for daily instruction or your original teacher for academic progress
- 4) **MYSTERY READER:** Students that have a new delivery teacher will schedule a new Mystery Reader time!





Specific Notes for In- Person Students



SCHOOL CAPACITY FOR IN-PERSON LEARNING

We have maximized every square inch of space in the Inman property through the use of a distancing calculator to understand maximum distanced capacity per room. Adjustments to grade level locations/classrooms have been made accordingly.

WHAT ARE THE HEALTH SCREENING PROCEDURES?

- 1) **At home** - Parents will assess students on the PikMyKid app before sending them to school each day. The results of the self-assessment will determine if the students should go to school or remain at home.
- 2) **At school** - Per APS, Temperatures will be taken at the entry doors (bus and carpool) daily.

RISK REDUCTION AND MITIGATION

- ❖ MES formed a COVID Readiness Team composed of volunteers which includes MES Staff, parents, health experts, and logistics experts.
- ❖ The COVID Readiness Team's goal was to "Reduce risk for students and staff while maintaining an environment of high quality learning."

MITIGATION STRATEGIES

- ❖ Consistent and correct use of masks
- ❖ Social distancing to the greatest extent possible
- ❖ Cleaning and disinfection throughout day
- ❖ Contact tracing in collaboration with local health Department and APS Health Services
- ❖ CARE room for students/staff exhibiting fever or symptoms of COVID. Immediate/Prompt pickup is required.

F2F CLASSROOM EXPERIENCE

- ❖ Classes will remain as a cohort (bubble)
- ❖ No sharing materials
- ❖ Students will be socially distanced in the classroom
- ❖ Desks have been added as needed to rooms
- ❖ Carpets will not be used.
- ❖ Wipedowns of high-touch surfaces will occur throughout the day
- ❖ Hand sanitizer dispensers installed in every classroom
- ❖ Hand washing/sanitizing built into the day



Eating at School

- ❖ Breakfast and lunch will be delivered to the students' individual classrooms
- ❖ Students will be able to eat outdoors after we are in a pattern of efficiency
- ❖ Breakfast and/or lunch must be ordered one week in advance. Order form [HERE](#) and on the Reopening tab of the MES Website.



Cafeteria use will be revisited after the first two weeks of school



HALLWAYS

- ❖ Water fountains have been replaced by water bottle filling stations
- ❖ Students will social distance 6 feet apart, with helpful markers
- ❖ Social distancing dots will be on the walls in the hallways
- ❖ Stairs are one way access
- ❖ Hand sanitizer stations throughout the building
- ❖ Restroom breaks are built into the day

RESTROOMS

- ❖ Restrooms will be assigned based upon proximity to class.
- ❖ Whole group restroom visits will be scheduled to encourage social distancing and limited exposure outside cohort.
- ❖ Emergency passes will be used on a limited basis to assist with social distancing in restrooms.
- ❖ Middle sinks and stalls will be marked off to allow for social distancing.
- ❖ Masks must be worn at all times while in the restroom.
- ❖ Custodial schedules revised to include frequent cleaning and check points of all restrooms



RECESS

- ❖ Scheduled recess times by class and locations that will rotate to support social distancing across 8 pre determined recess zones.
- ❖ These spaces are marked by color markers and signs





TECHNOLOGY

Kindergarten Device Plan

At this time, students will not be asked to bring devices back and forth from home. We have iPads for them to use when necessary!



TRANSPORTATION

With any mode of transportation...

- ❖ Student health questionnaire should be completed prior to students leaving home
- ❖ Students will be temperature screened at the door
- ❖ Parents/guardians may not enter building to walk students to class
- ❖ Staff will be stationed throughout the building to assist with movement and finding classes

TRANSPORTATION

Pikmykid

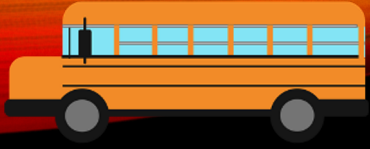
- ❖ Download from phone's app store and each parent/guardian register account using information provided to Transportation Form
- ❖ Students will automatically pop into your app once they are loaded into the site. This app will be used for daily health screening
- ❖ ***Used for change in dismissal (up to 2PM)***
- ❖ Used for car line queue and bus notifications

Transportation Options-Carpool



- ❖ PLEASE BE PATIENT! Huge carpool numbers!
- ❖ Parent must remain in car
- ❖ Car doors will need to be opened by students from inside and outside of the car
- ❖ Line queues on Virginia Avenue back toward North Highland and runs through the front parking lot at MES@Inman. ***No left turn from opposite direction, and right turn only out***
- ❖ Students will be health screened at home with PikMyPid prior to leaving home

Transportation map is available on MES website under Reopening Plans -> Transportation



Transportation options - BUS

- Students will be required to wear masks.
 - Bus operators will have additional masks to provide students in case students do not have them.
 - Buses will be cleaned with approved cleaning products before and after drop-offs. Students will be loaded from the back of the bus to the front of the bus in order to avoid students passing by each other. When weather permits, windows will be cracked along with the roof emergency hatches.
- Bus operators will be trained to verbally stop students without a mask and issue them a mask.
 - Transportation will also be prepared with “sick buses” for any student presenting with temperatures during the school day requiring the student to go home but the parents are unable to pick the student up from school.
 - There should be no expectation of social distancing for students who ride

Transportation Options - Bikers, Walkers



BIKERS

- ❖ Bike racks at front of school off of Virginia Avenue



WALKERS

- ❖ Walker pad located at flagpole off of Virginia Avenue
- ❖ May park in neighborhood and walk to walkers pad
- ❖ Do NOT drop students off on Virginia Avenue alone



Afterschool (MAS)

Morningside After School (MAS)

- ❖ Following clustered cohort model
- ❖ Registration information was shared in Digital Dolphin weeks of 1/4/21 and 1/11/21

FACE to FACE Reminders

Please do not send your child to school with any symptoms!

Walking Children to Class

At this time, we will not be allowing parents/guardians to walk students to classrooms. We will have staff members available to ensure students get to their classrooms safely.

Changing Dismissal

The only acceptable method for changing dismissal will be through the PikMyKid App. Changes may be made until 2PM. Unless there is an emergency, this is the procedure we will be following. Please try to limit changes in dismissal!

What Can F2F Parents Do?

- 1) Visit our Reopening Plans tab on the MES Website
- 2) Continue to reinforce wearing masks, washing hands, and social distancing
- 3) Look at the checklist on the website under F2F Return To Learn for tips to help your child (practice opening lunch containers, etc.)



SUPPLIES:

Please send in as many supplies as your child can carry on the first day. Any materials that do not fit, please send them in the next day.

- Label all supplies


BACKPACK:

List of Items that should be present in backpack daily:

(please make sure that your child has a full size backpack - no preschool size backpacks)

- Full change of clothes- including underwear and socks (season appropriate)
- Extra Mask
- 1 - Two pocket folder of choice
- Water bottle - child should be able to open and close independently - spill proof
- Lunchbox - with items students can open independently
- Snacks that students can open independently
- A light sweater or jacket to keep in backpack.

SHOES: children need to be able to each tie shoes independently or wear shoes with no laces



ALLERGIES: Please let us know ASAP if your child has an anaphylactic allergy or needs an inhaler - even if you have already alerted Nurse Petty. If allergies present as symptoms of COVID-19, please get a doctor note and confer with Nurse Petty.

APPROPRIATE CLOTHING: Please make sure your child is dressed for the weather elements. They will have significant times of the day they will be outside and we want them to be warm and comfortable. Furthermore, please make sure your child is dressed in layers to allow them to adjust to fluctuating temperature in the building.

We are in this together, and excited to open our school to students after 10+ months!